



JACKSON COUNTY DETENTION CENTER

FACT SHEET
Fall 2022

JUSTICE WITH DIGNITY

In order to provide for the public safety of the citizens of Jackson County, it is sometimes necessary to detain and house those who may harm themselves or others in the County Detention Center. Most of these individuals are awaiting trial, sentencing, or, if sentenced, incarceration at state institutions.

Jackson County will meet the community's needs by planning and building a detention center that is safe, secure, efficient to operate, and incorporates thoughtfully designed long-term solutions for the Jackson County Justice System.

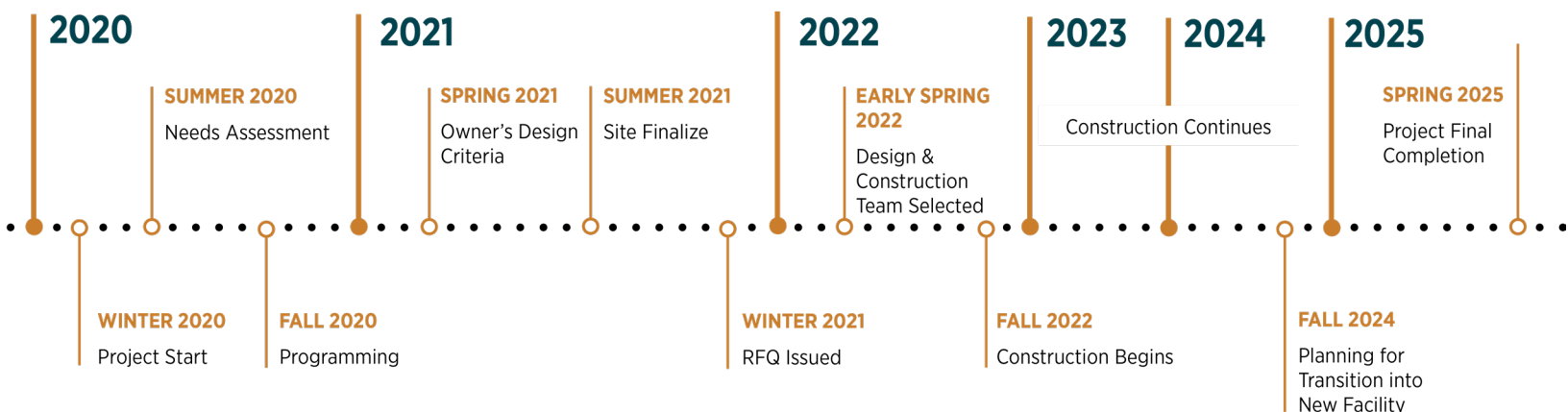
One of the key elements of planning, building, and operating a detention center, is respecting the dignity of detained individuals. To accomplish this, the facility will provide evidence-based treatment and training opportunities that address the needs of the individual and the underlying causes of criminal behavior.

PURPOSE

Overcrowding and deteriorating facilities require the need for an upgraded Jackson County Detention Center. With a new facility comes a new approach. Jackson County has established a multi-phase plan to support the planning, design, construction, and activation of a new detention center facility for its citizens.

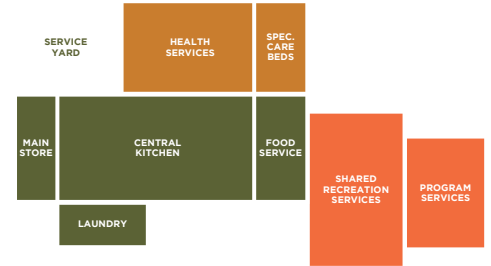
The new facility will institute best management practices, and a better environment for detainees, visitors, and employees. It will include educational resources and social services programs—all aimed at making our community safer by reducing relapse into criminal behavior and encouraging all to become productive members of society.

PROJECT TIMELINE

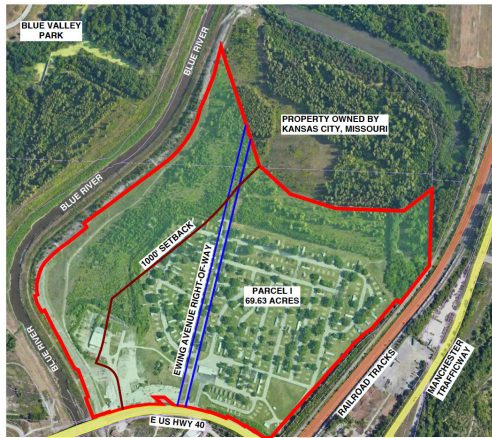


PROGRAMMING

The Programming Phase provided a guide for county officials in the preparation of a new detention center design that will accurately meet the goals, objectives, and conditions for both the immediate and future needs of the county. A programming strategy was developed to review the main facility components of a new detention center to determine how the facility is built.



Elements of the program have been defined by core principals, including state-of-the-art detention center standards; equitable and evidence-based treatment and training opportunities; and a safe, secure, and efficient program to meet the long-term needs of the county. An emphasis was made to create a facility that would provide an atmosphere where every person, including those in custody, staff, and visitors can find success. With focus on healing and rehabilitation, the facility looks to offer productive outcomes for all parties.



7000 E US HIGHWAY 40 KANSAS CITY, MO
(site location in red outline)

SITE DEVELOPMENT

The goal for the detention center in its chosen location is to provide a positive impact on the surrounding community, one that offers a catalyst for future growth and regional partnerships. The new facility will be seen as community resource, providing employment and enhanced economic opportunities for the surrounding communities. The potential for new and enhanced infrastructure within the area, including improved roads and underground utilities, will be associated with its construction. Through good planning and design, the facility will become a community asset that is welcoming, safe, and iconic for both the county and the municipality.

The one-to two-story facility itself will encompass approximately 400,000 SF. It will be designed and constructed to support an estimated resident population through the year 2,030 (1,204 beds). The site's initial infrastructure, though, would support an increased resident population estimated through 2050 (1,366 beds).

PROJECT TEAM

A project of this scale requires the services of an Owners Representative who specializes in the development of large county jail facilities, understands the ins and outs of the design-build delivery method, and knows how to work effectively with Jackson County to deliver the fullest measure of success. Jackson County has engaged JCDC Partners, a proven partnership comprised of CGL, the nation's leading justice facilities expert, and Newmark Grubb Zimmer (NGZ), a Jackson County-based commercial real estate firm with a proven history of success in working with Jackson County.



Following an in-depth evaluation, the steering committee determined that a best value design-build construction delivery method was ideal for the county. After a thorough three-step qualifications-based process, Jackson County has engaged JE Dunn | Axiom | DLR as the Design-Build (DB) Team. The team will have primary design and construction responsibility for the Center, and will be accomplished in multiple phases, including pre-construction, design and construction.



STEERING COMMITTEE

- FRANK WHITE *County Executive*
- THERESA CASS GALVIN *Past Chair of County Legislature*
- DARRYL FORTÉ *Sheriff*
- J. DALE YOUNGS *Presiding Judge*
- JEAN PETERS BAKER *County Prosecutor*

JACKSON COUNTY LEGISLATURE

- JALEN ANDERSON *1st District at-Large*
- CRYSTAL WILLIAMS *2nd District at-Large*
- TONY MILLER *3rd District at-Large*
- SCOTT BURNETT *1st District*
- RONALD E. FINLEY *2nd District*
- CHARLIE FRANKLIN *3rd District*
- DAN TARWATER III *4th District*
- JEANIE LAUER *5th District*
- THERESA CASS GALVIN *6th District*