



# JACKSON COUNTY DETENTION CENTER

COUNTY LEGISLATURE  
MONTHLY REPORT  
APRIL 2024

## BUDGET & SCHEDULE REPORT

The Detention Center project remains on schedule. Substantial Completion is anticipated in December 2025, with operations in the facility beginning February 2026. A final Component Package will be presented later this spring at a price that falls within or under the agreed upon Guaranteed Maximum Price.

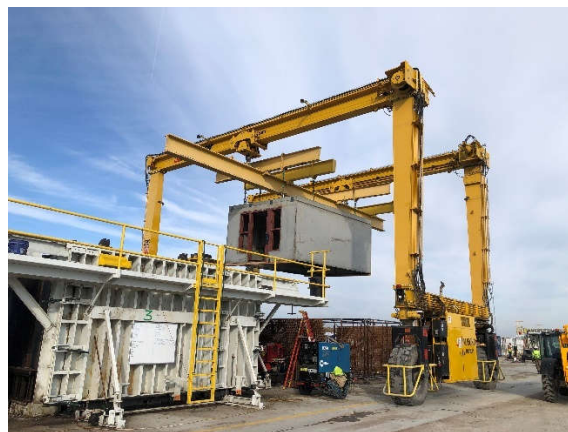
## DESIGN PHASE

100% Construction Documents have been completed by the Design-Build team has issued for bidding purposes. An exhaustive review of the design has been completed by the user groups, County Project Team, Commissioning Agent, and JCDC Partners. Final drawings have been submitted for permitting.

The interior finish selections have been presented to the various stakeholders in the project including Corrections and the Courts. At the same time work continues on the design of the Furniture, Fixtures, Equipment (FF&E) and Technology components of the project. As noted last month, weekly meetings continue with the Design-Builder and Transition Team to ensure that all items necessary to operate a functional facility are identified and accounted for prior to occupancy.

## CONSTRUCTION STATUS

The fabrication of a four-person cell module was recently reviewed by the County Project Team at the Cornerstone fabrication yard. Quality standards are checked as well as the placement of all accessories such as water closets and light fixtures to ensure accuracy and consistency. Productivity has increased with the addition of more molds that allow for 12-15 modules to be fabricated per week. Labor rates for the off-sit Core batch plant and cell fabrication site have been brought into compliance with the County Legislature's Resolution, as well as cell deliveries to the project site.



Pictured below is an area being prepared for a concrete slab. Formwork, rebar, waterproofing, and conduit are being installed systematically in specific areas to allow for efficiency and speed of construction. Upon placement of the concrete the slab is ready for walls including the placement of the modules from the fabrication yard.



At the Central Utility Plant conduit placement is exponentially more intricate. This area is home to all the large mechanical, electrical, and plumbing equipment such as electrical switch gear, boilers, chillers, cooling tower, and generators.

Special Inspections are being conducted by Olsson including rebar inspection, compressive strength testing, concrete sample collection, floor flatness and leveling. A settlement plate survey is planned for the first week of April.



Coordination to provide electricity and gas service to the facility continues with Every and Spire.

## **TRANSITION PHASE**

In April a two-day session is scheduled with the Transition Team as the representative user group begins to consider how to train staff and operate a new facility in a direct supervision model. This collaborative effort

will include move logistics, a hiring plan, and best practices. Engagement and meetings will continue through the entirety of the remaining project schedule, until the new building is open and operational.

## **COMMUNICATION**

April is Construction Safety month. The project team will be hosting weekly toolbox talks with subcontractors on site to highlight safety procedures and conditions. Our team will promote safety awareness in a variety of applications this month within our project protocols and safety training. Recurring building site tours continue with the County Legislature on the second Tuesday of the month at 3:00. Please sign up with Ashley Burked for confirmation and training prior to visiting the site.

A Steering Committee meeting has been scheduled for May 7<sup>th</sup>. A tour and project update will be conducted as well. Our team is also actively engaged with outside stakeholders such as the Public Defender to discuss the project and its impact on all who will be involved in its use.

Social media posts continue to be developed to keep the public informed. Additional information is also continually updated at the project website [jcdetentioncenter.com](http://jcdetentioncenter.com)