



JACKSON COUNTY DETENTION CENTER

COUNTY LEGISLATURE
MONTHLY REPORT
JULY 2024

PROJECT STATUS

On June 28th, the Design-Build team provided the County Project Team and JCDC Partners Component Package 3 and the Guaranteed Maximum Price (GMP) contract modification. These documents are under review and will be presented to the County Legislature in August. This component package totals \$5,647,858 and allows for the buy-out of the remaining 5% of the work, based upon 100% Construction Documents while continuing within the overall \$301,162,067 budget.

Also provided for review and future presentation is Component Package 4 to provide all services, installation labor, and material, excluding County provided items, for the Furniture, Fixtures and Equipment (FF&E) and Technology for the project in the amount of \$14,050,693. These components have been designed in collaboration with building user groups to outfit the building within the parameters of the funds allocated to the project as part of the County's 2024 budget. Component Package 4 will provide additional MWBE participation.

Approval of this component would shift this scope and funds to the GMP contract increasing it to \$315,212,760. An additional \$3,513,265 would remain outside of the GMP in order to fund additional technology services and equipment that will be procured by Jackson County utilizing existing and local vendors. The County and JCDC Partners studied several potential methods of procuring FF&E and this approach provides the County with the most predictable schedule, best value and \$1,000,000 in savings from what was initially budgeted.

CONSTRUCTION STATUS

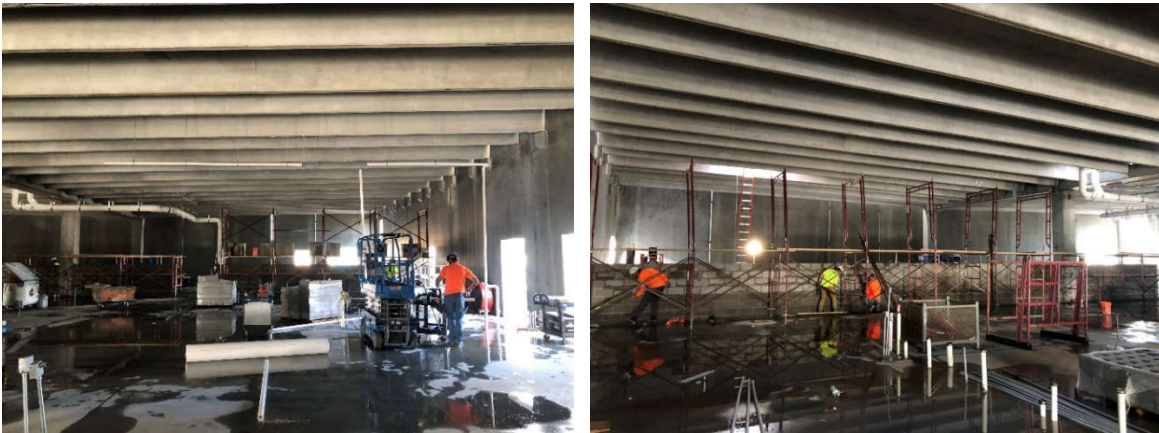
Progress on site has been steady with additional concrete footing and slab pours, precast erection, masonry partitions, modular cell placement, MEP rough in and mockups. The building form continues to take shape and this vertical progress can be more easily observed from a distance. Below is a collection of photographs taken in recent weeks. The project is on schedule, the day of this memo July 3rd, 2024, is the 415 day of a 940 day schedule. The following photos document progress to date.



Pictured above: rear chase mockup showing the mechanical, plumbing, and electrical layout behind the cells that allow for maintenance access without entering a secure and occupied environment.



Pictured above: additional slab on grade pours expanding the building footprint that is constructed.



Pictured above: masonry wall construction within a partially enclosed space.



Pictured above: continued precast wall panel placement both architectural and structural.

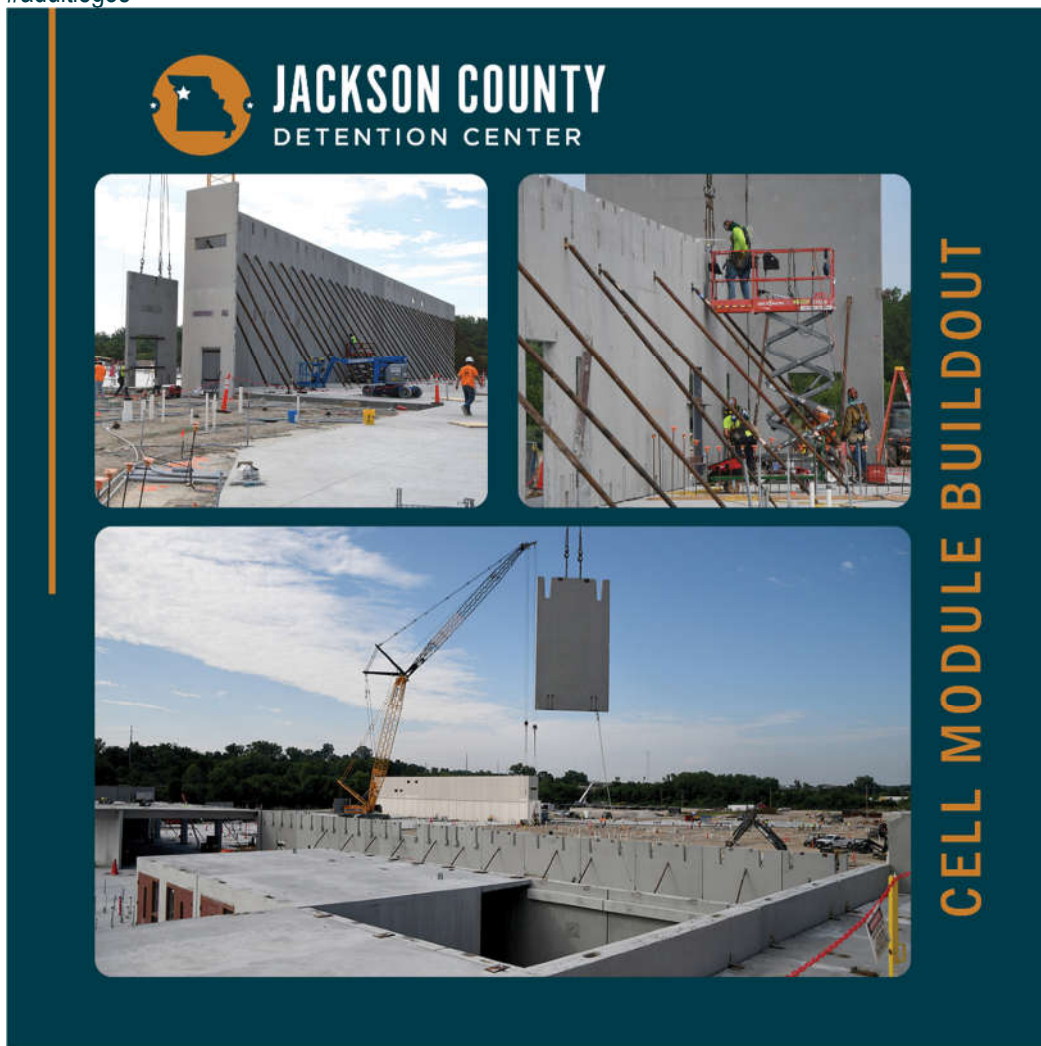
COMMUNICATIONS

Fact Sheet Q2

The Fact Sheet for Q2 is in development and will be available on the website soon.

Social Media content was provided to Jackson County's Communications Department following approval and protocol by the construction team and on-site county administrator.

Post #1: Cell Module Buildout: At the new detention center, the buildout of the cell modules can resemble a giant life size lego set. The process begins with precast module cells which are connected in pods. Once the pods are placed at the site with the support of cranes, the skin and support systems are installed by a team of construction professionals from @JEDunn and @Axiom Construction. #JacksonCounty #JacksonCountyDetentionCenter #adultlegos



Post #2: Utility Placement

The base of the new detention center will consist of large concrete slabs. In preparation, several site utilities have been completed to facilitate the distribution and collection of utility services for the project. These utilities include water, fire hydrants, sanitary sewer, and stormwater collection and management systems. #JacksonCounty #JacksonCountyDetentionCenter #utilities

