



JACKSON COUNTY DETENTION CENTER

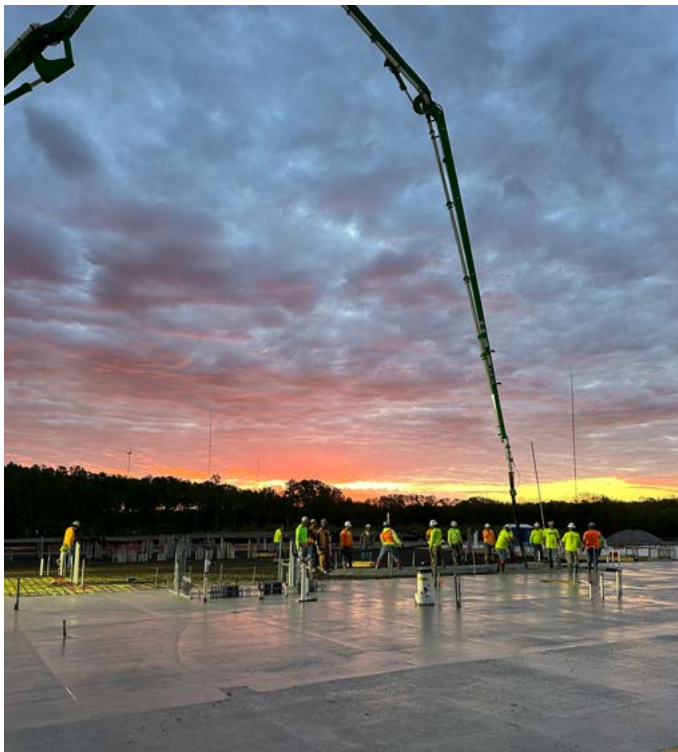
COMPONENT PACKAGES 3&4

OVERALL PROJECT STATUS

The Detention Center project is on schedule and remains within budget with owner and construction contingencies currently totaling nearly \$5,000,000. Substantial Completion is scheduled for December 16, 2025 and full building turnover is February 12, 2026.

Today is day 462 of the overall 940-day schedule. (As of Monday August 26, 2024)

\$115,357,804. has been invoiced as of August which represents 38.3% of the \$301,162,067 GMP. Footings and foundations are complete, slabs are 100% complete and precast erection is 45% complete as of this week with work progressing from the northwest to the southeast. Roofing has begun on the Central Utility Plant. Transition planning has begun.



575+ Precast
Panels
Erected

523,239 LBS
of Rebar Installed

114 Cell
Modules
Set out of 273

100%
Slab on Grade Placed

11,962 CY
Concrete Placed to Date

Numbers above as of August 5, 2024.

COMPONENT PACKAGES 3&4

Two final packages have been submitted by the design-builder for Legislative approval. Component Packages 3 & 4 and have been reviewed by JCDC Partners and the County team.

COMPONENT PACKAGE 3

Valued at \$5,647,858, Component Package 3 is within and completes the GMP with **no change in cost or schedule**. The scope of Component Package 3 includes millwork, flooring, certain furnishings, specialties, fencing and landscape.

\$5,647,858 included in GMP

COMPONENT PACKAGE 4

This package includes the Furnishing Fixtures and Equipment (FF&E) and Technology systems necessary to outfit the building and increases the GMP by \$14,050,693. **It does not change the overall schedule for completion and turnover of the building**. This amount will increase the GMP amount to \$315,712,760.

MINORITY / WOMEN / VETERAN PARTICIPATION*

	TOTAL
Component Package 3	54%
Component Package 4	40.5%

*percentages reflect M/W/V Enterprise commitments, not actual

The FF&E and Technology work will overlap the construction completion of the building and represents nearly 100 individual purchasing efforts, which

require close coordination between purchasing, installation and construction to insure the overall schedule is met.

**\$14,050,693 amended to GMP
\$3,512,260 to County Term & Supply Contracts**

The individual components have been or will be competitively bid, are purchased under a cooperative purchasing agreement with Omnia or are purchased from designated providers by the County.

Component packages 3&4 installation work will be performed by union labor.

The overall scope and cost are below the previous JE Dunn budget by a difference \$666,428, and that amount has been established as additional Owner contingency within this Package.

Examples of what is being purchased include: workstations and furniture, medical and dental equipment, shelving, radio system, network equipment and certain security-related systems.

\$3,512,260 remains in the County's budget to purchase equipment and supplies where a term and supply contract is in place.

