

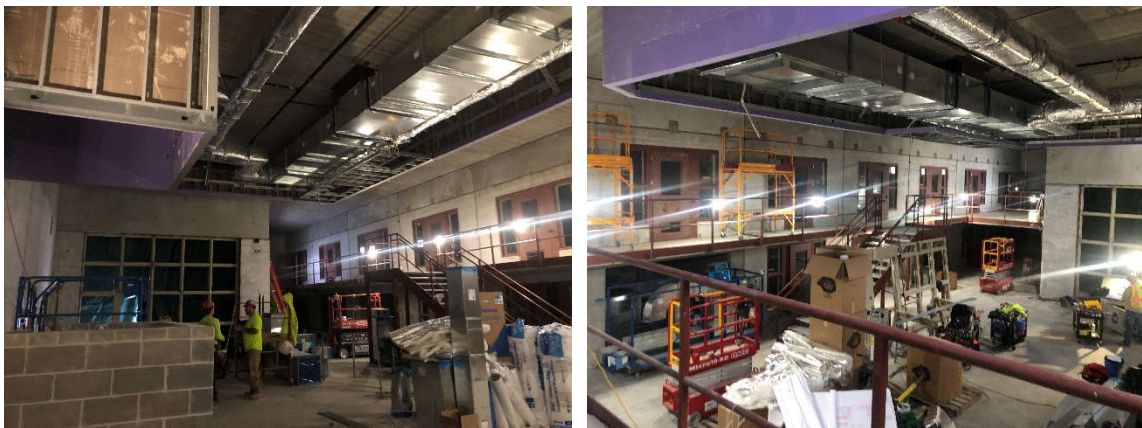


JACKSON COUNTY DETENTION CENTER

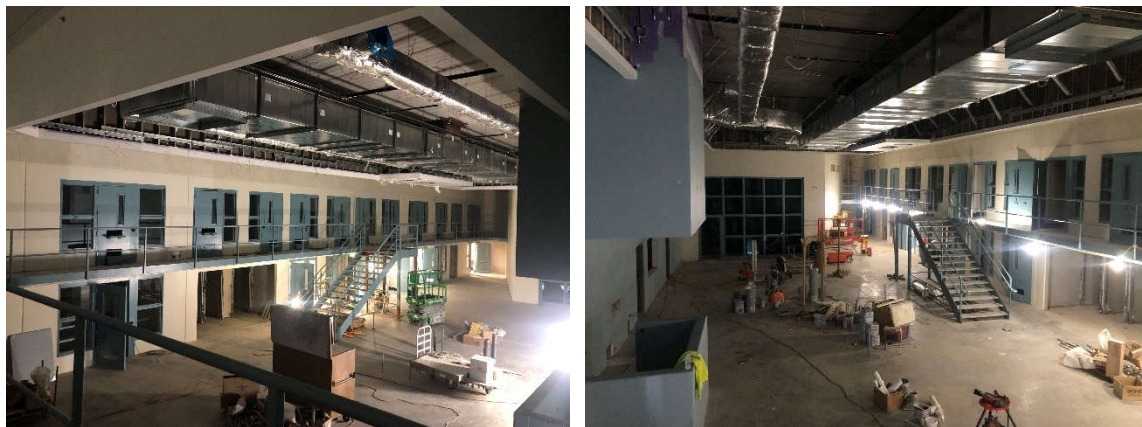
COUNTY LEGISLATURE
MONTHLY REPORT
FEBRUARY 2025

CONSTRUCTION STATUS

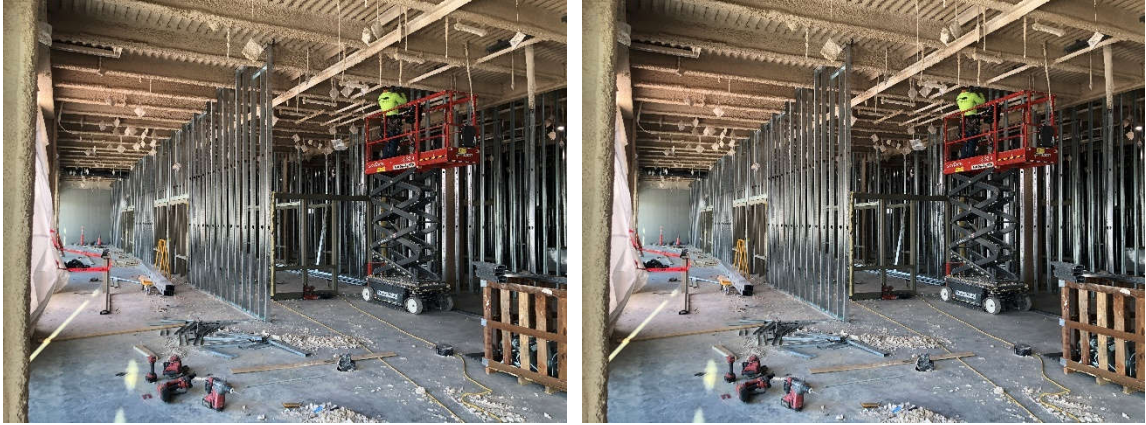
Cold winter weather and record setting snowfall created temporary delays and additional work for crews including the clearing of snow from the site and roof before activities could proceed normally. However, the overall schedule has not been impacted and building turnover remains unchanged. Within the relatively warm walls of the building, work continues across multiple fronts including overhead plumbing and gas piping, electrical buildout and lighting, masonry, fireproofing, drywall, and paint.



Above: Overhead mechanical ductwork is being installed within the dayrooms prior to the installation of the acoustic ceiling tiles and lighting fixtures.



Above: Dayrooms after receiving paint on the concrete walls and detention grade doors and frames. Installed above doors near the ceiling are acoustic panels which soften noise and reverberation in the space to make for a more comfortable environment.



Above: Images from within the Administration areas with spray-on fireproofing at the deck above and partitions made of metal studs and masonry being constructed.



Above: Future area for the Courts prepped and ready for spray-on fireproofing.



Above: Areas of roofing covered in snow and others prepped and ready for additional installation.

DESIGN STATUS

Architects at DLR are working on the design of unique murals which will be placed in each dayroom to assist with identifying areas within the building while also providing visual interest focused on recognizable landmarks throughout Jackson County. Wayfinding and signage for the entire building has been designed and coordinated with input from the user groups.

The County project team and JCDC Partners continue to collaborate with various Owner Vendors to finalize the technological aspects in the building. These include wireless internet connectivity, video visitation services, and audio-visual components. The majority of Furniture, Fixtures and Equipment under the GMP has been ordered.

TRANSITION & ACTIVATION

The JCDC Partners Transition & Activation team continues to meet on a regular basis to prepare for facility activation. The focus of this month's work centers on an updated operational staffing analysis to update the projected model that was developed with only a space program back in 2019.

JCDC Partners is working closely with the operational end users to match the industry's best practices to the final facility design and will also be conducting on-site interviews in the near future to assist in making recommendations for areas such as case workers with the addition of new beds.

COMMUNICATIONS

The Communications team helped to gather updated figures and social media posts to celebrate the "topping out" ceremony at the project site. The event was well attended by both the Design-Build project team and County officials, including the County Executive, who gathered at the site to celebrate this important project milestone, which is one of the largest in the County for many decades. The event was professionally photographed by the County and Newmark Zimmer.

The Communications team has also been preparing a list of opportunities to promote the project through relevant speaking engagements and conferences. Upcoming deadlines for such events include:

Correctional Mental Health Care Conference | July 20-21, San Francisco, CA

National Conference on Correctional Health Care | November 1-5, Asheville, NC

American Correctional Association: Congress of Correction | August 21-26, Denver, CO

